



Lilac Station- Lombard Mixed-Use

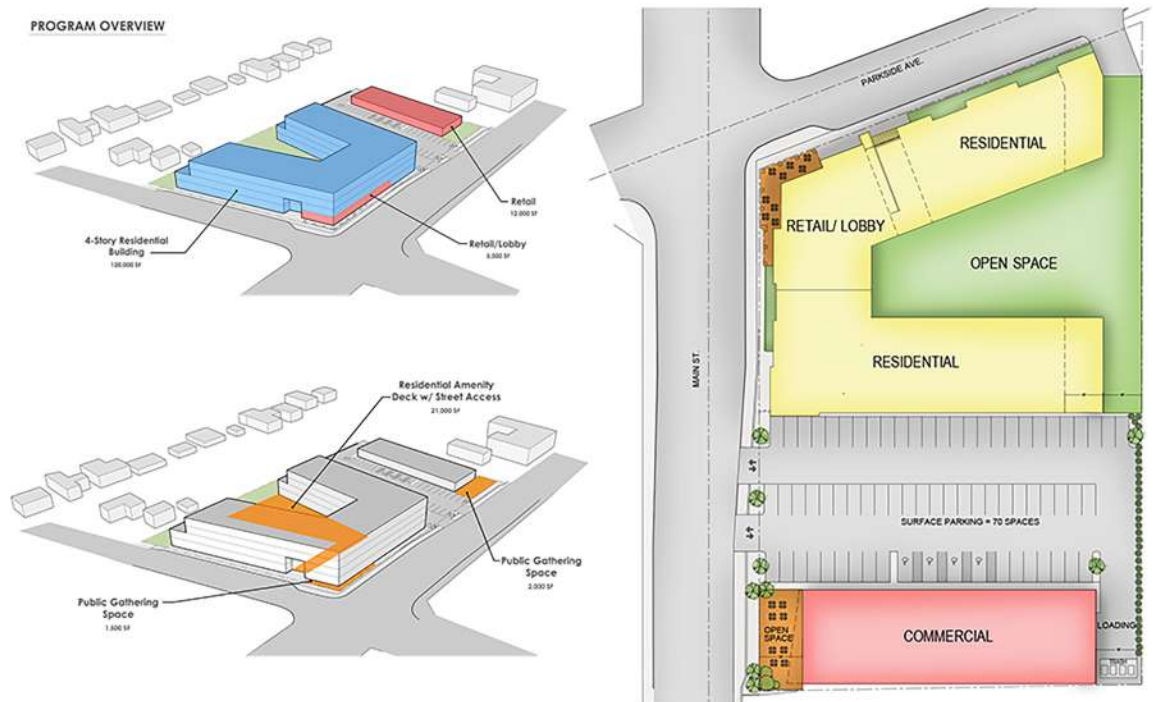


Architect:
Tandem Architecture

Developer: Holladay
Properties

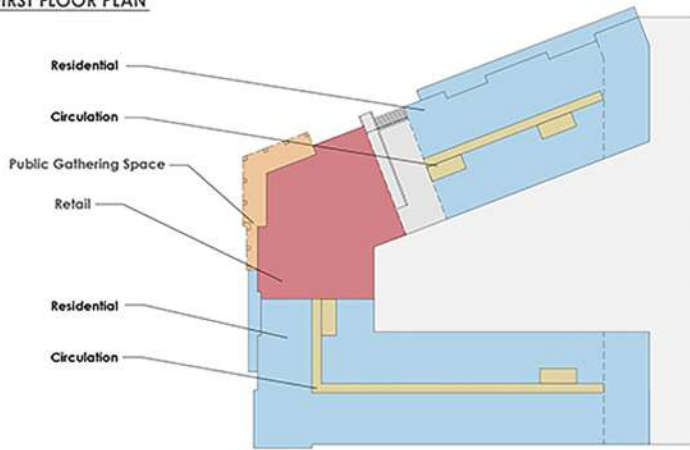
124,790 Total SF
2.2 Acre Site
120 Residential Units
17,173 SF Retail
FAR 0.77

Tandem Architecture created a design for a proposed 120 unit mixed-use apartment building and new 12,000sf grocery store on a 2 acre site across from the Metra Station in downtown Lombard. The building features a corner arcade intended as a public gathering space outside the lobby, and an outdoor element for a future restaurant. The U-shaped building has a protected public space with direct access to the street, balconies for each unit, and raised terraces at the street level to conceal the below grade parking. 70 surface parking spaces are provided for the future CO-OP Grocery store with its own 2,000sf outdoor space on the southern portion of the property.

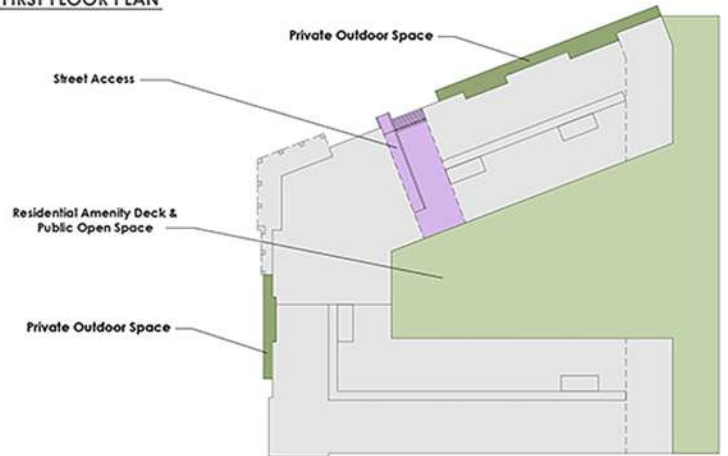




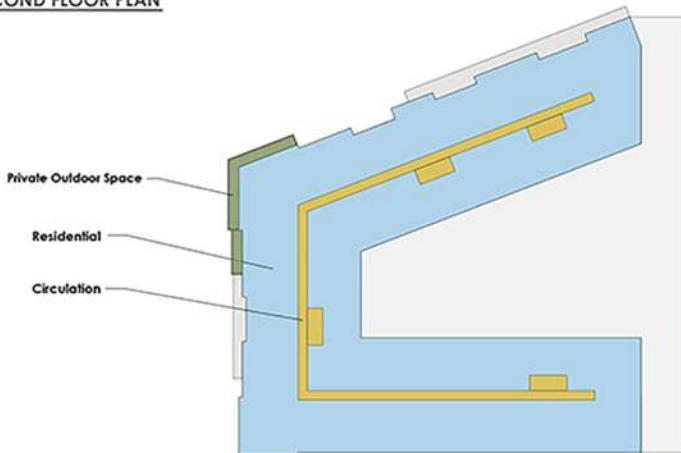
FIRST FLOOR PLAN



FIRST FLOOR PLAN



SECOND FLOOR PLAN



THIRD & FOURTH FLOOR PLAN

